

# ADAPTIVE MINE BAR



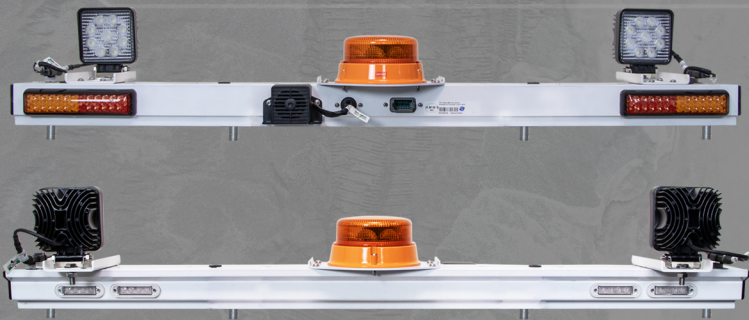
➤ PART NUMBER : HMA-2801141120-00

## THE NEW HMWS LIGHTBAR

The team at HMWS has now released a new Mine spec light Bar. The Philosophy behind this product is that with new technology in the mining sector running rampant with the requirements for additional features, Brackets, and especially additional Antennas, We saw a requirement for a light bar that could cater for all the additional Brackets, Antennas, GPS receiver's & other items that are required in a modern mining environment, whilst maintaining a clean simple cost-effective bar if these items are not required.



The Light Bar as standard has Rear facing LED Light Clusters, a Class 1 LED rotating Beacon, an Auto-adjusting reverse alarm & 4 x Forward-facing indicators, connected via the popular 12 pin Panel mount Deutsch connector neatly fitted into the bar. The bar also has wiring facilities for the Flag pole, & work lights folded inside the light bar, that can be extracted through the grommets as and when required.



HMA-6701010321-00  
FLAGPOLE MOUNT

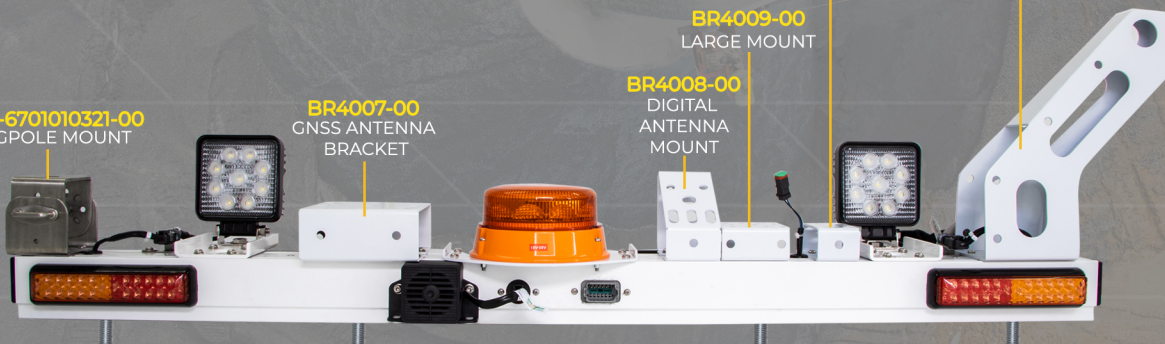
BR4007-00  
GNSS ANTENNA  
BRACKET

BR4008-00  
DIGITAL  
ANTENNA  
MOUNT

BR4009-00  
LARGE MOUNT

BR4048-00  
WORKLIGHT MOUNT  
BRACKET

HME4010A-00  
RHS RADIO ANTENNA  
(W/ SPACER)



HMWS also has a range of pre-designed brackets for most Antenna & work light fitments, that are also available. The bar also has separate cavities for the mounting hardware, so that no possibility of the hardware damaging the wiring, the versatility of the bar is achieved through "T" slots & stainless "T" nuts, which allows for the fitment of additional brackets without drilling, or any changes to the light bar easy changes & removal or replacement.



Contact: [sales@harnessmaster.com.au](mailto:sales@harnessmaster.com.au)  
[www.parts.harnessmaster.com](http://www.parts.harnessmaster.com)