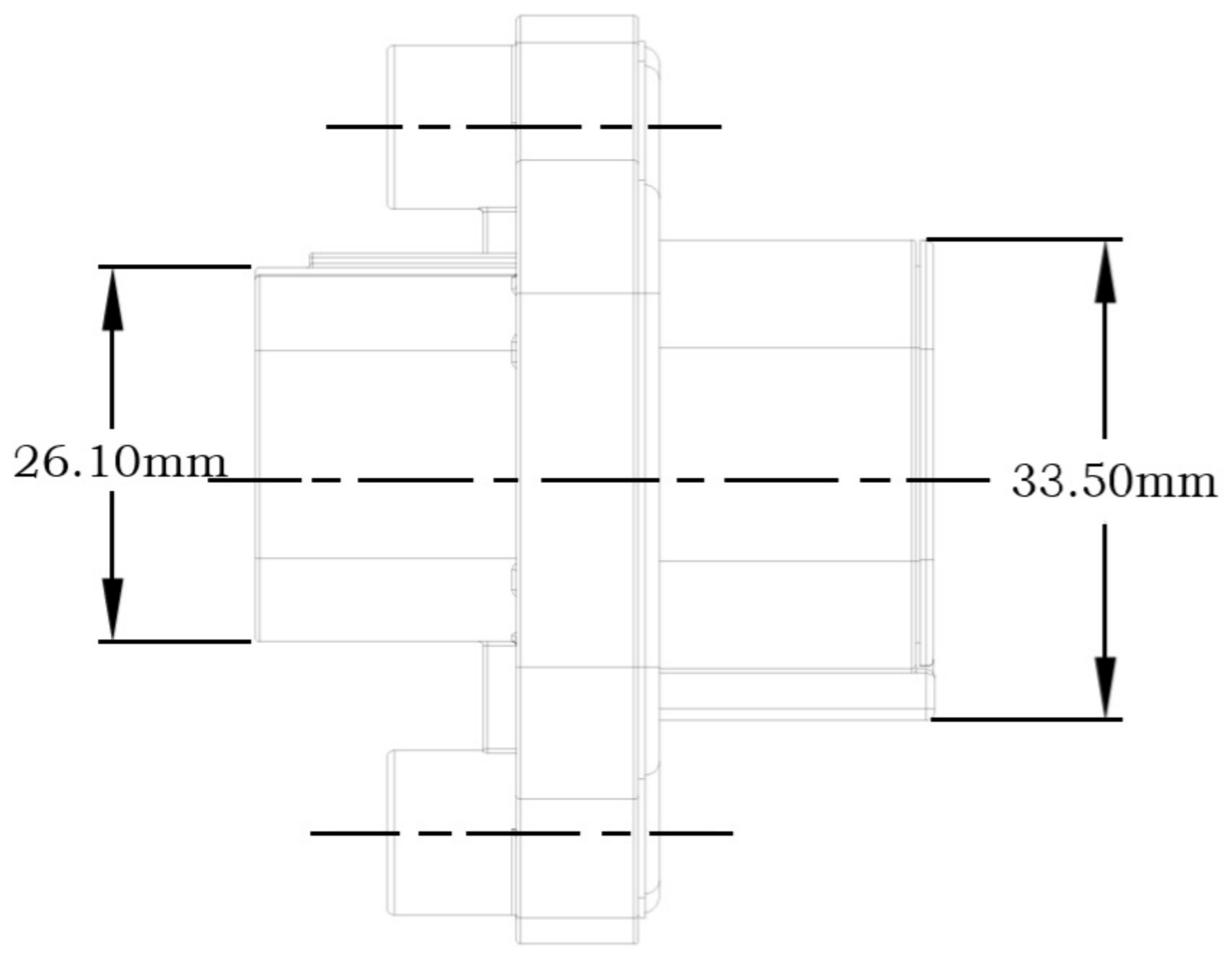
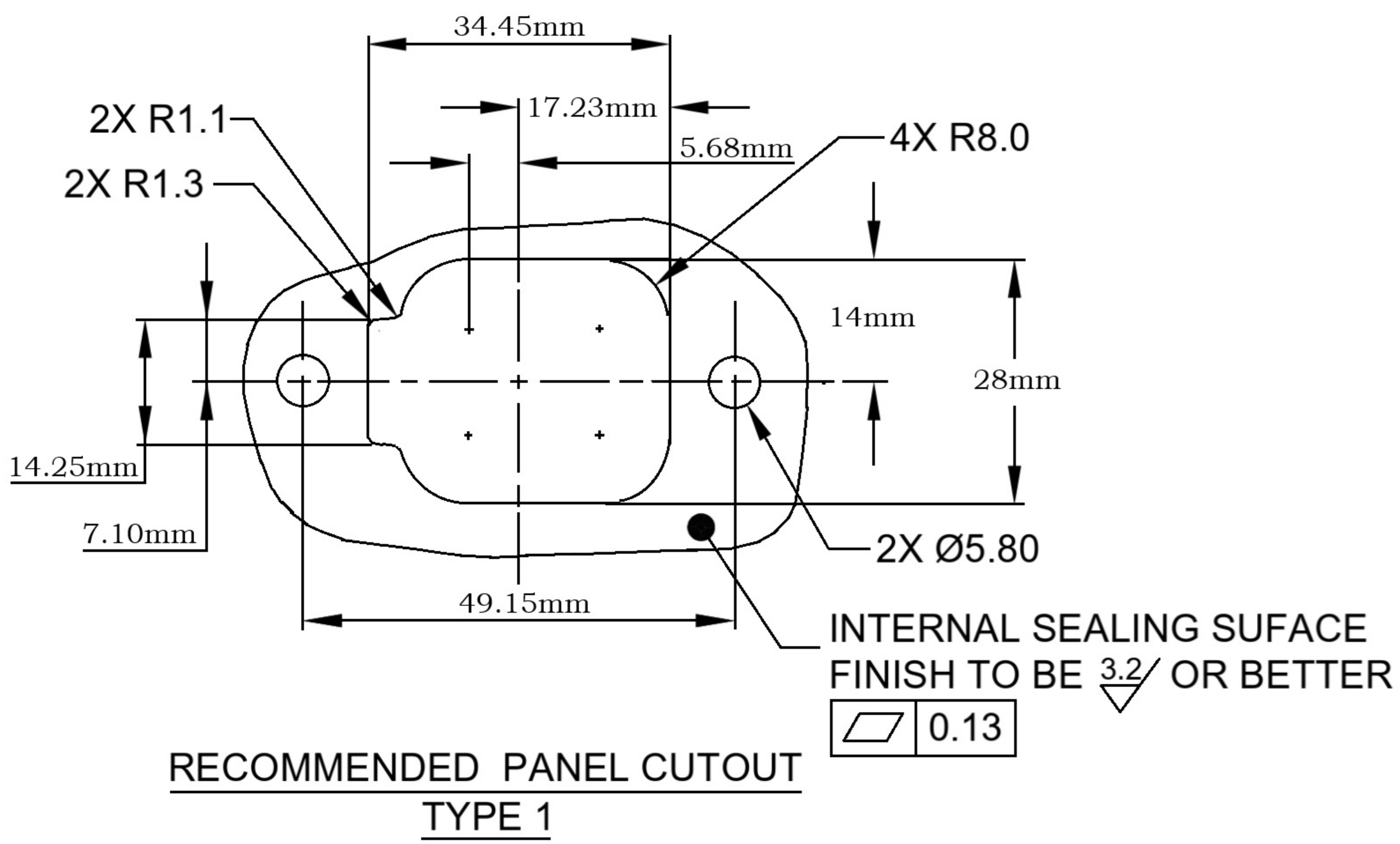
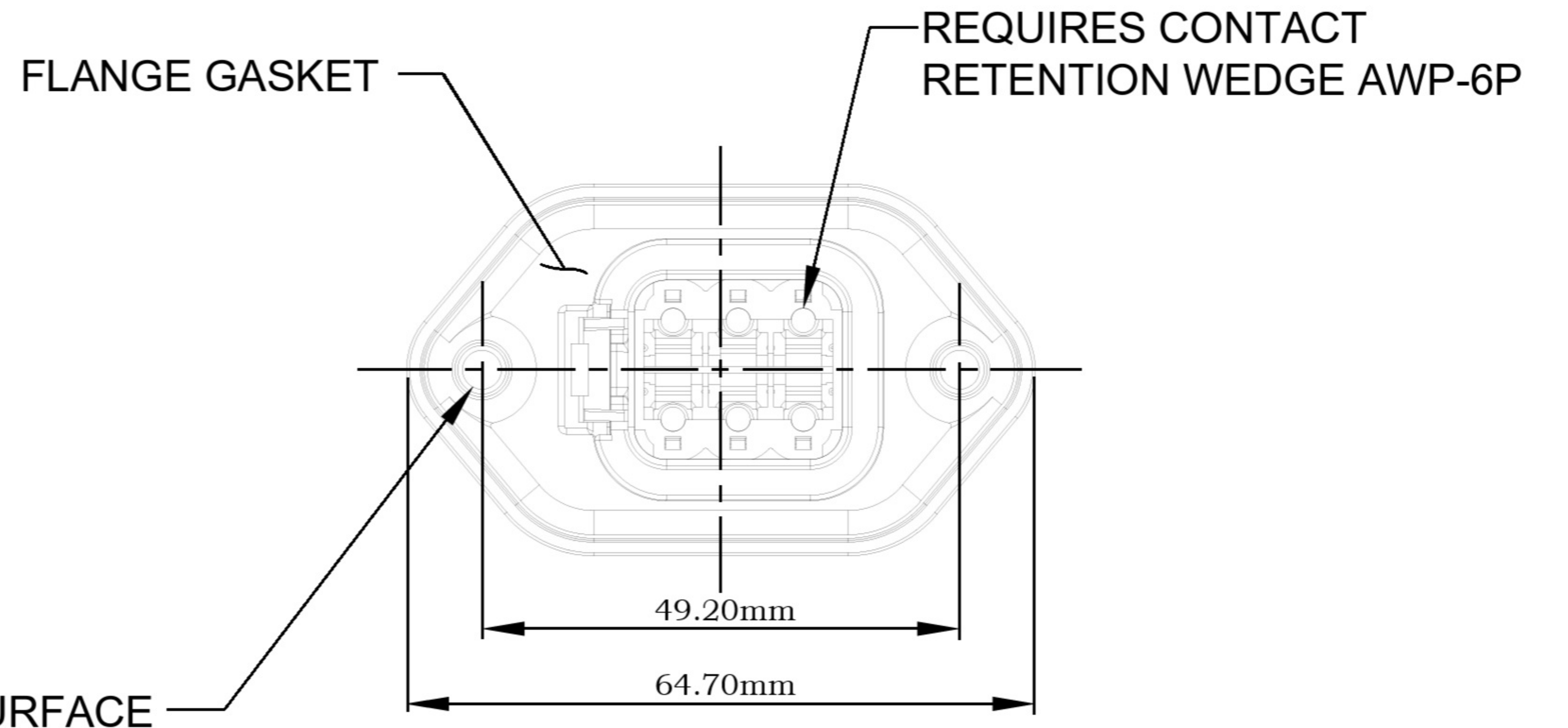
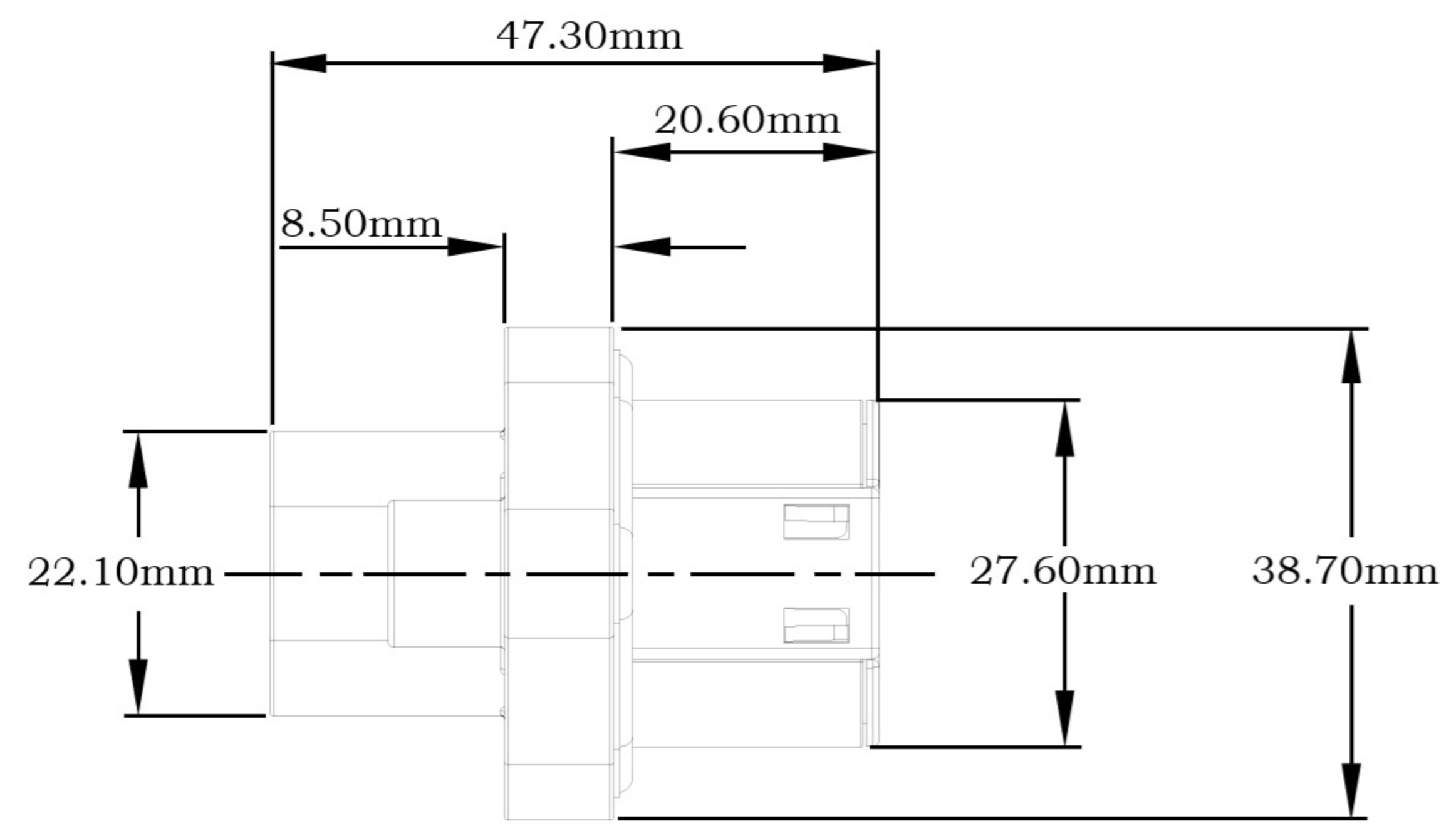
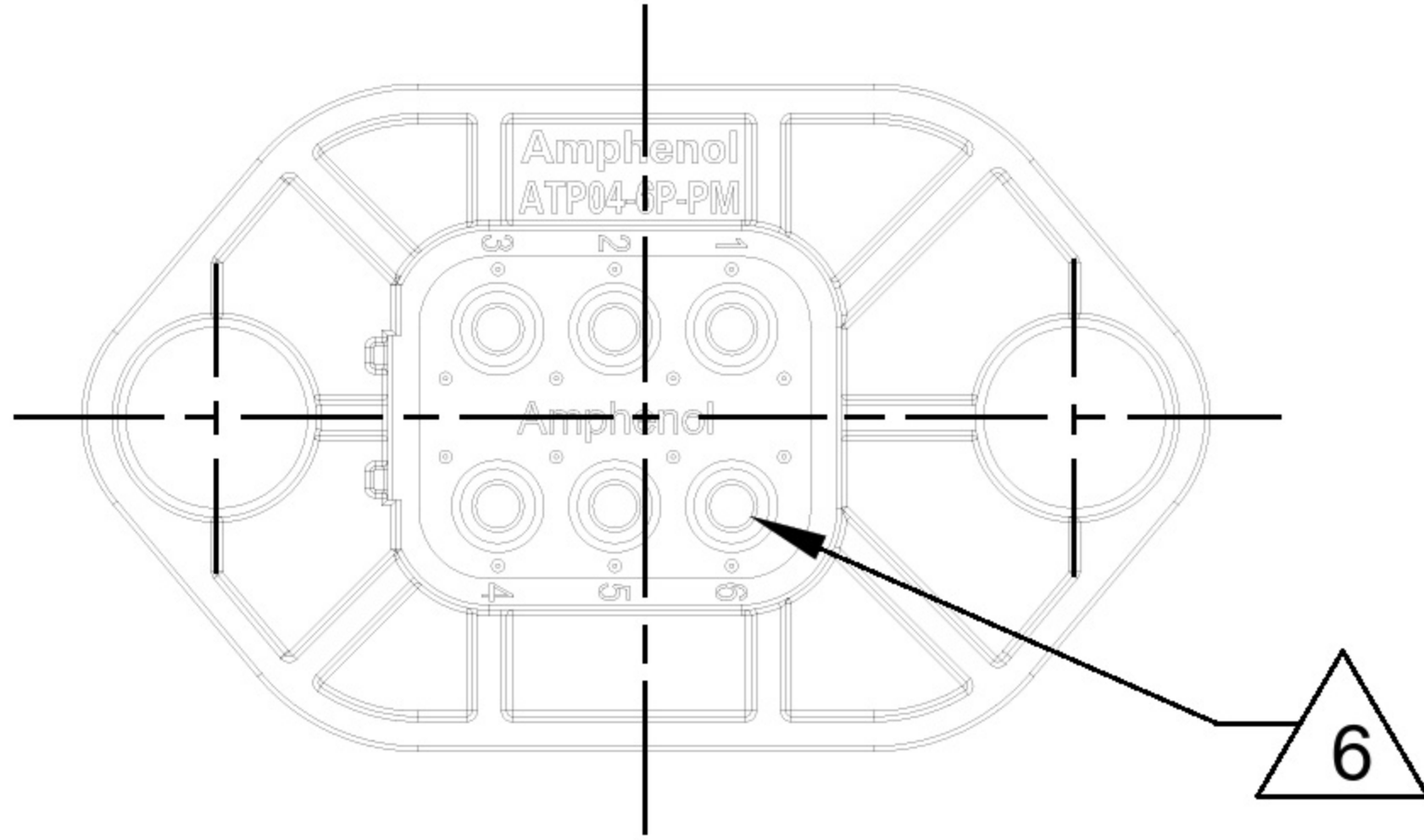
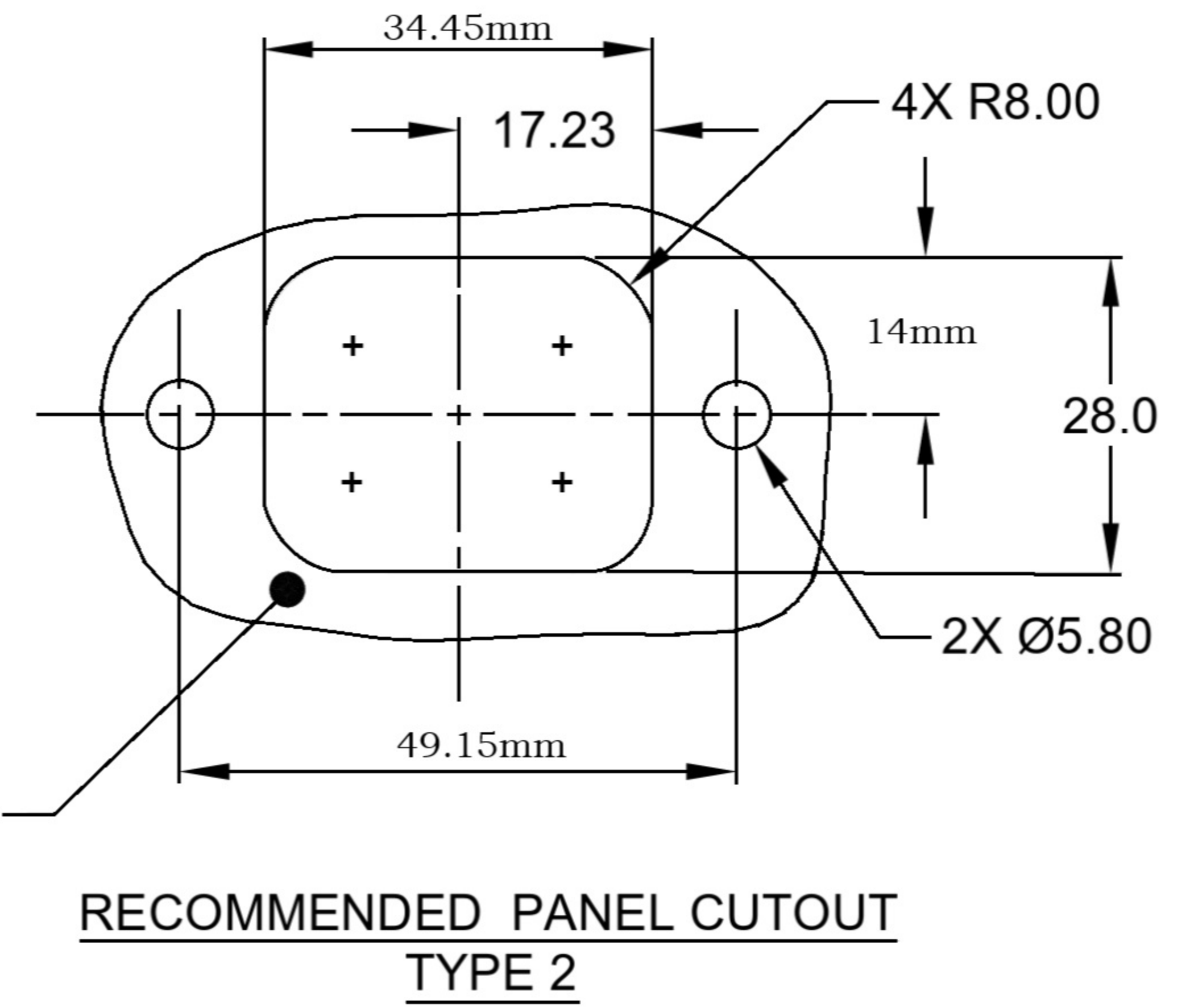


# DIMENSIONS



INTERNAL SEALING SURFACE  
FINISH TO BE 3.2 OR BETTER

0.13



2X Ø4.0, 16.1 DP FROM MATING SURFACE  
RECOMMENDED ATTACHMENT OPTIONS:  
1. HEX WASHER HEAD SHEETMETAL SCREW, #10, HEX SIZE 5/16"  
2. SELF THREAD SCREW FOR PLASTIC SUCH AS ST 4.8 .

RECOMMENDED TORQUE VALUES: 1.9~2.2N.M

6. CONTACT SIZE AND REAR SEAL WIRE RANGE:  
STANDARD SEAL:

CONTACT SIZE	MIN. INSUL O.D.	MAX. INSUL O.D.	TYPICAL WIRE RANGE
12	3.40 mm (.134 in)	4.95 mm (.195 in)	10 - 14 AWG (5.0-2.0mm <sup>2</sup> )